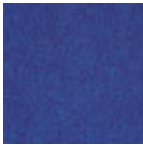


Prelude[®] Fabric Information
Nomadic Approved Colors

These fabric swatches are presented as a guide to availability. Due to inconsistencies in monitor color reproductions, we have included the closest PMS color matches to each fabric color. Larger swatches are available online at www.meldedfabrics.com. In addition, fabric swatch cards are available to confirm the selection from your dealer.



AEGEAN
PMS = 294U



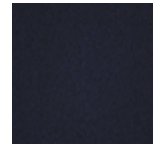
MIST
PMS = Cool Grey 7C



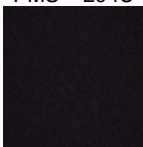
CHESTNUT
PMS = 440C



GUMP
PMS = 5463C



COBALT
PMS = 2767C



ECLIPSE
PMS = Black 6C 2X



FLAME
PMS = 1807C



ROYAL
PMS = 281C/282C



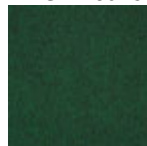
MADISON
PMS = 195C



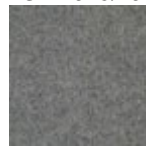
ASH
PMS = 426U



PLATINUM
PMS = 429U/430U



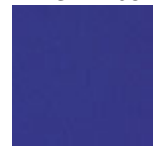
FOREST
PMS = 3435C



SHADOW
PMS = 424C/425C



VENICE
PMS = 726U/728U



MAJESTIC
PMS = 280C

Features

Because fabrics in the Melded Collection are hard wearing and compatible with Velcro, they are the ideal choice for use on walls or any vertical surface.

Dent Resistant

The resilient pile of the Melded Collection bounds back, normally showing no pressure marks.

Easy to Clean

Soil often does not show on fabrics in the Melded Collection, and may not require cleaning at all. However, when needed, they clean easily with most general purpose cleaners without streaking, fading, pilling or fraying.

Anti-Static

The fabrics are also treated with an "anti-static" agent to resist lint, dirt and dust. Effects of static electricity are rarely felt at relative humidity even as low as 30%.

Durable and Mildew Resistant

In addition to being resistant to knocks and abrasions, the nylon and polyester fiber blend used in the production of fabrics in the Melded Collection make them inherently mildew resistant.

Non-Fraying and Easy to Apply

The technologically advanced thermal bonding process creates fabrics that are dimensionally stable, non-fraying, lightweight and easy to apply.

Flammability & Toxicity

The Melded Collection of wall and vertical surface fabrics have been thoroughly tested against key local and international standards, and all achieved the following favorable results:

ASTM E84-91a "Tunnel Test"

Complies with NFPA Class A and UBC Class 1

UBC 8-2 (42-2, 1991 UBC) (fully lined protocol)

Meets "acceptance criteria"

NFPA 265, Method B

Results available on request

CAN/ULC-S102-M88

Results available on request

New York State Art. 15 Part 1120 Toxicity Test

Classified as "No more toxic than wood"

• Flammability test certificates are available on the Melded Fabrics website at: www.meldedfabrics.com

**Prelude® Fabric Information
Nomadic Approved Colors**

Other Applicable Tests

Tensile Strength (STRIP)

ASTM D1682
Transverse: 290 N/5cm
Longitudinal: 180 N/5cm

Tear Strength (TRAPEZOID)

ASTM D2263
Transverse: 220 N
Longitudinal: 130 N

Abrasion Resistance

Taber ASTM D3884
1500 cycles, moderate appearance change only.

Stoll AS2687 B-84
Heavy duty rating after 5000 cycles.

Martindale BS 5690 Rub through point
exceeds 100,000 cycles.

Mass Per Unit Area

ASTM D3776
300/340 g/m² (depending on color)

Color Fastness to Light

ISO 105=302 4/5 Rating
(suitable for interior use only)

Thermal Insulation Properties

ASTM C518
R.56 rating using the calculation method as stated in ASTM
C653-83